



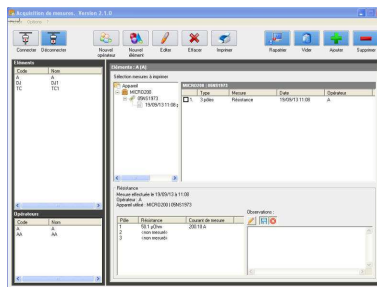
MO 200-MO 300

DIGITAL MICRO-OHMMETER

CIRCUIT BREAKER CONTACT RESISTANCE, LOW RESISTANCE

MEASUREMENT ON POWER SYSTEMS, BUSBAR JOINT RESISTANCE, DC railway relay...

- Micro-ohmmeter up to 300 Adc (model dependant)
- test current set from 1A to 300A
- True regulated DC current ripple-free. Can be used as regulated current generator to test DC relay (Ex. railway...)
- Test controlled by microprocessor
- Built-in thermal printer in option
- Software for PC recording with USB link
- Test on circuit breaker with both side grounded (with 200A clamp in option)
- robust waterproof plastic case with handle
- Lightweight only 9kg (MO 200) 10kg (MO 300)
- Direct reading on large graphical screen : current, sense voltage and resistance
- Measurement from 0.1µohm to 25mohm with 200A and up to 5 ohms with 1A
- Measurement method Kelvin « 4 wires »



LOW RESISTANCE MEASUREMENT

- Dim L x l x H : 410 x 340 x 215mm
- Weight≈ 9 kg (MO 200) 10kg (MO 300)

SPECIFICATIONS

Power supply : 100 to 264 Vac 50/60Hz single phase earthed. Without restriction for test current

Protections :

Power supply by circuit breaker

Injection by thermal monitoring and electronic protection

Current generator :

DC regulated programmable from 1A to 300A

Ripple-free—Voltage max : 5V

Burden max : 100A steady. 200A full power (1kW) >5mn (for MO 200), 300A full power (1.5kW) >5mn (for MO 300) and OFF time 10 mn at 25°C ambient.

Measurements :

Voltage :

- 3 ranges from 0 to 5 V (40mV, 600mV, 5V)
- Precision 0.5 %

Current :

- from 1 to 2A precision 1%. 2 to 300A precision 0.5%

Resistance :

- 4 display ranges : 0-999,9 µΩ, 1.000 to 9.999 mΩ, 10.00 to 99.99 mΩ, 0.1000 to 5.00Ω

Typical precision 0.2 % at 50 µohm with current 50A to 300A. Max precision : 1%

Accessories supplied

Mains lead L=2.5m, user's guide

Options

Built-in thermal printer

Injection and meas cables 5m

Extension cables 10m (injection) et meas (15m)

Ground cable with clamp

Measurement clamp 200Adc

Verification shunt 300A/30mV

Software

Remote control

Ref MO-IMP

Ref JCI6-5M

Ref JCI6-EXT10

Ref JC-TE

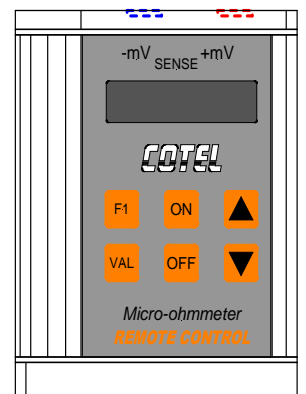
Ref MO-CL200

Ref SH300-30

Ref MO-ACQ

Ref MO-TEL

With the remote(in option) you can place the equipment on the ground and take the measurements. The remote has most of functionality of the display. You can read measurements, select the current, START/ STOP, launch the printer. Remote has two inputs to take the voltage measurements.



A wide selection of cables kit (Exemple earthing bronze clamps, Kelvin cables, full length cables without extension...)



OCEAN WINDS, S.L.

C/ Mare de Deu de Montserrat, 118
08840 Viladecans (Barcelona)
Tel: 93 658 17 84 - Fax: 93 658 39 13
info@impedancia.com
www.impedancia.com